

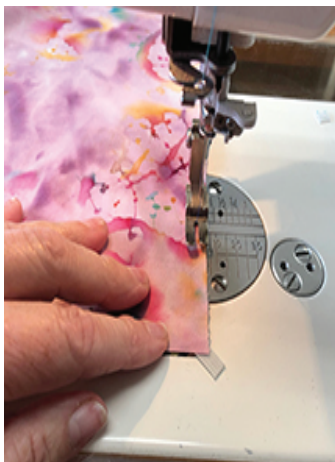
Pleated mask with elastic

Materials:

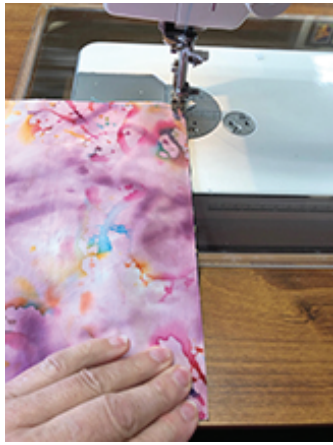
Two 9" squares of fabric
Two 6" pieces of 1/4" elastic



Place squares right sides together. Peel back top layer and place elastic on first layer at the corner. Make sure elastic sticks out beyond the fabric edge. Cover with top layer.



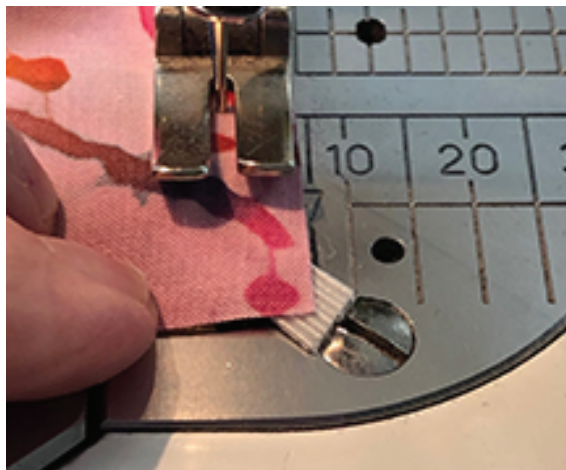
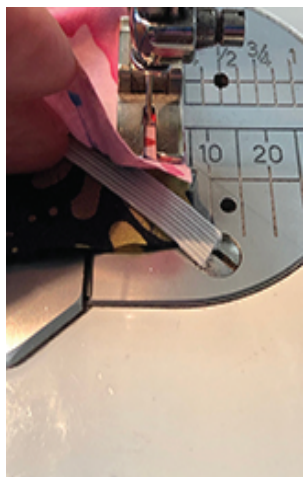
Start sewing a few inches away from the corner and secure with a back stitch.



Sew a 1/4" seam. Turn the corner making sure you sew through the elastic.

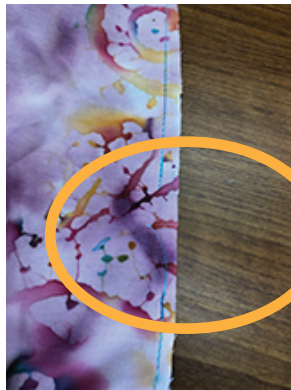


When your presser foot is a few inches away from the next corner, reach inbetween the fabrics and pull the end of the elastic to the corner.



Sandwich it between the layers like the first corner and sew around the corner, sewing through the elastic.

Repeat these steps to attach the second piece of elastic to the last two corners.



Stitch along the last straight edge and stop a few inches before the beginning of the seam to leave an opening for turning. Use a back stitch to secure it. Reach into the opening, turn the mask right side out. Give a tug on the elastic to help open it out.



Press the outside edges.



Fold in three pleats until the height is about 3.5". Close is close enough. Press.



Top stitch around the outside of the mask. You're done!